

Wet Blast Machine for cemented carbide chips

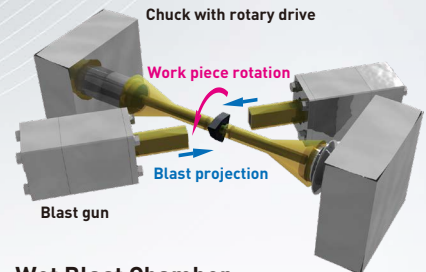
- Mini-velo gun 6x12
- θ-axis chuck drive
- Manual loading/Unloading
- Automatic processing
- XYZ axis transfer device
- Use a loading pallet

# RBI-203



Wet blast machine of semi-automatic processing cell which handles a cemented carbide chip (insert) individually and automatically processes one by one.

- An operator only changes the pallet
- Suitable for various kinds of work piece with easy setup change
- Collected the scrap of work piece and crushed abrasive material to realize stable processing \* An optional sludge filtering unit is required.



### Wet Blast Chamber

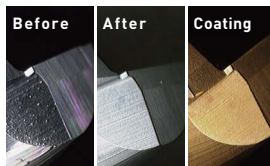
Hold the work piece and blast it with a blast gun for aiming while rotating.

## Application example



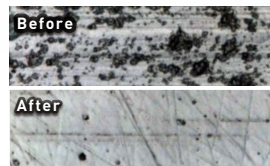
### Cutting edge honing (Rounding cutting edge)

Removes the burrs at the edges that occurred during the manufacturing process, and round the end faces to prolong tool life.



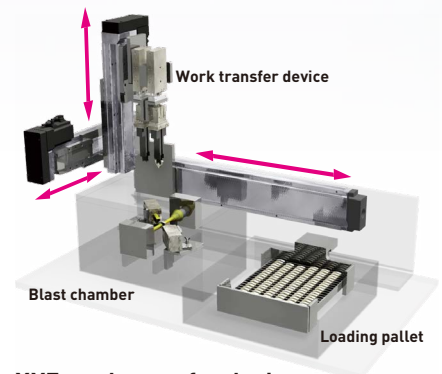
### Coating pretreatment

Scrapes the surface and removes various dirt to form a surface condition suitable for coating.



### Coating after treatment

Removes droplets generated by PVD such as ion plating and sputtering.



### XYZ work transfer device

Chuck the work piece in the pallet with the air chuck and automatically carry it to the blast room.

Wet Blast Machine  
for cemented  
carbide chips

# RBI-203

## Specifications

Dimensions	1200W × 1150D × 1800H mm	Power supply	AC200V, 50/60 Hz, 3-phase
Blast gun	6×12 Mini-velo gun 2pcs.	Power consumption	Approx. 2.5 kW (Total rated apparent power of all equipment)
Work piece	Inscribed circle $\phi 6.35 - 25.4$ mm Thickness 2.4 - 9.5 mm *Excluding holeless chips.	Power capacity	Approx. 5.2 kVA (Excl. incoming current)
Loading mass	Max. 50 kg	Air supply pressure	0.5 MPa - 0.7 MPa
Air pressure	0.1 - 0.4 MPa	Air consumption	1.4 m <sup>3</sup> /min (NTP, at blast air pressure 0.3 MPa)
		Option	Sludge filtering unit

## General View

