

Conveyor type Wet Blast Machine

Wide Gun 370mm/630mm×2

Full automatic

Conveyor type

PFE 300T/N, 600N

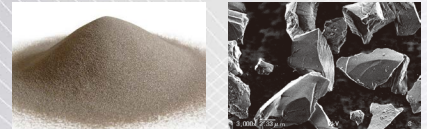


PFE (Physical Fine Etching) application

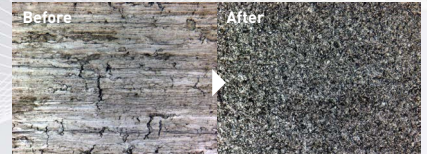
PFE achieves dual processes of cleaning and precise treatment by blasting slurry of water and a super fine abrasive of the diameter of 7 μ m.

Perfect machine for cleaning of high definition electronic substrates by physical etching top layer of work pieces at the submicron level.

A#2000, A super fine abrasive



Al alloy treated surface



Wide Gun 630

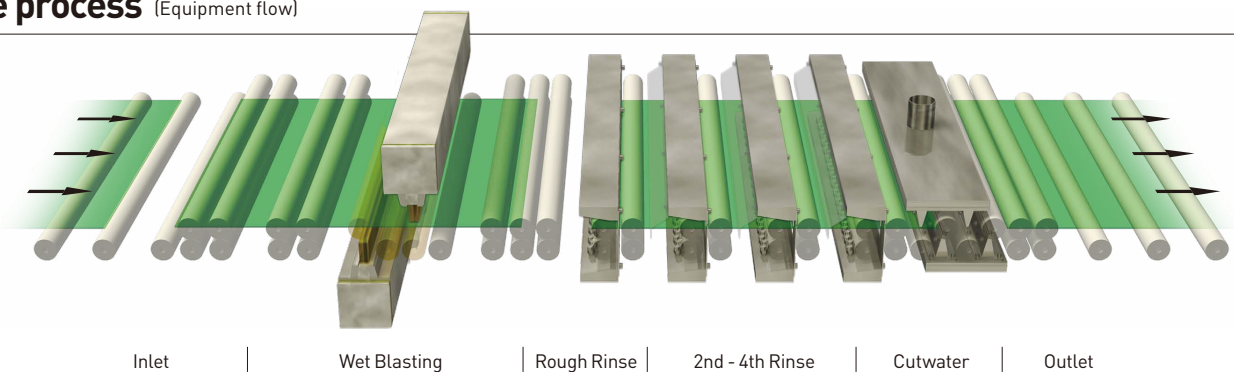


Conveyor type with easy maintenance



- Maximum work piece size : 600mm of a large sized board
- Uniform process using our original wide guns.
- A full automatic in-line process from Wet Blasting, rinsing to cutwater.

The process (Equipment flow)



Conveyor type Wet Blast Machine

PFE 300T/N, 600N

Main features

Machine type	PFE 300T	PFE 300N	PFE-600N
Blast Gun	Wide Gun 370mm× one each on top and bottom	Wide Gun 370mm× one each on top and bottom	Wide Gun 630mm× one each on top and bottom
Work piece	Width : 200-350mm Length : 250-700mm Thickness : 0.04-0.5mm	Width : 200-350mm Length : 250-700mm Thickness : 0.1-2.0mm	Width : 200-600mm Length : 200-700mm Thickness : 0.1-2.0mm
Transportation speed	0.5-3.0m/min	0.5-3.0m/min	0.5-3.0m/min
Abrasive	A#800-#2000	A#800-#2000	A#800-#2000
Power supply	AC200V, 50/60Hz, 3 phases	AC200V, 50/60Hz, 3 phases	AC200V, 50/60Hz, 3 phases
Power Capacity	Approx. 23kVA	Approx. 23kVA	Approx. 23kVA
Power consumption	Approx. 15kW (Total rated apparent power of all the equipment)	Approx. 15kW (Total rated apparent power of all the equipment)	Approx. 15kW (Total rated apparent power of all the equipment)
Air supply pressure	0.5MPa-	0.5MPa-	0.5MPa-
Air consumption	9.0m ³ /min (NTP at 0.2 MPa of preset blast air pressure)	9.0m ³ /min (NTP at 0.2 MPa of preset blast air pressure)	14.0m ³ /min (NTP at 0.2 MPa of preset blast air pressure)

Outline dimensional drawing (PFE 300T)

